

# iTalkie™/DS: dispatch console

*Innovative converged software dispatcher and fleet management*

**Dispatchers can seamlessly reach Motorola MOTOTRBO™ 2-way radio and mobile / fixed computer users!**

- Intuitive and easy to use point and click user interface
- Users on any communication technology can be reached either individually or as a group
- Exchange half-duplex voice calls and text messages
- Full-duplex phone-like intercom calls with other consoles and PC / PDA users
- Radio users can call individual dispatchers for 2-way Nextel-like PTT calls
- Emergency notifications display radio, flash icon and activate external siren/lights
- Display the location of all radio users and the history of where they have been
- Maps can be integrated or split as a separate window and displayed on a second monitor.
- Replay the last incoming call and call back the last caller
- Use the history of incoming calls and text messages to reach users back
- Control and monitor the status of an unlimited number of control stations
- Get more ROI by mix-n-matching new and existing equipment with different technologies
- Instant deployment

With the same ease of installation of the iTalkie™ clients, install this software on a PC, and in minutes you are ready to dispatch calls and text!

## ***Instant PTT, VoIP and text with any device!***

Dispatchers can call any user or group just by holding the mouse button pressed on their name. Working in conjunction with the iTalkie/RG radio gateway, radio users can make private calls and have 2-way conversations with individual dispatchers, reply to the call and text history by double clicking on it and change the RF channel of each control stations.

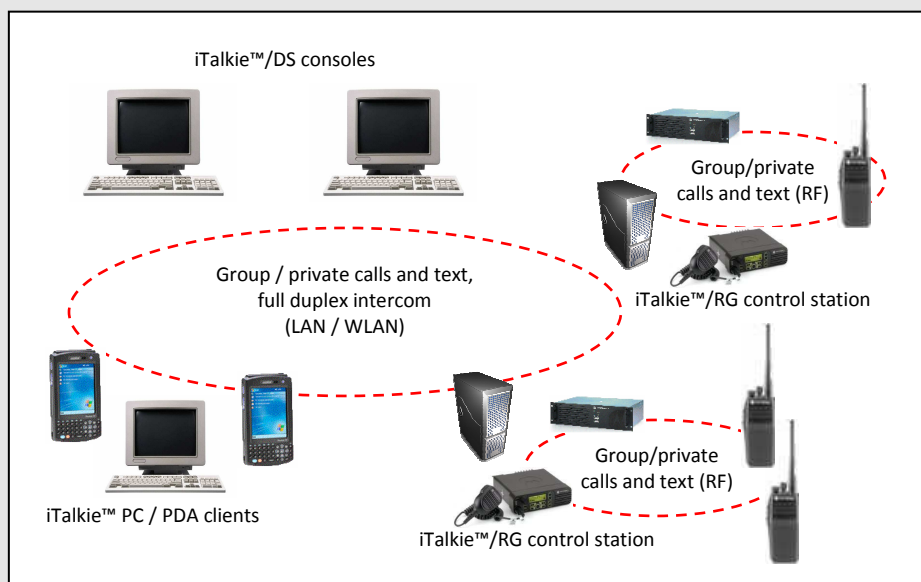
iTalkie™/DS makes communications with an unlimited number of users and control stations (via iTalkie/RG) a breeze. iTalkie™/DS knows each user's terminal technology and automatically allows all the appropriate services! Best of all, because of the underlying iTalkie™ architecture it can be deployed in minutes!

## ***Selected Features***

- Group and private calls and text between dispatcher and radios
- Group and private calls, phone like intercom and text with PCs and PDAs
- Reply to calls and text history
- Remote radio monitor, check, deque and enable/disable
- Cross-mute and select/unselect
- L/R balance control for group calls
- Private call alert
- Control stations channel control
- Center map on selected radio
- Audible and visible emergency alerts: map centers on flashing icon
- Low-latency HD quality voice with noise and echo canceling
- Small footprint, low CPU usage
- Runs on Windows XP/7/8 PCs

## ***Typical Applications:***

- Warehousing / Manufacturing
- Hospitality
- Education
- Public utilities
- Chemical plants
- Government
- Rural public safety



# iTalkie™/DS – converged dispatch console

## Selected Features

- Scalable to unlimited number of users, groups and control stations
- 1:M and 1:1 half-duplex voice to/from radios and PC/PDAs
- 1:1 full-duplex voice to/from PC/PDAs with call progress tones
- 1:M and 1:1 text messages to/from radios and PC/PDAs
- Click and hold to call an individual user or group (half-duplex PTT)
- Click to call a PC/PDA (full-duplex intercom)
- Double-click on the incoming calls and text message history to reply
- Display via Google Maps/Earth the current location of radios with traffic conditions and temperatures. Log and display history of an individual radio
- Remote radio monitor, inhibit, alert, dekey, check and display emergency alert
- Control station channel busy indicator and channel change option
- Last call replay
- Group call select/unselect, cross-mute and left/right/mute audio mixer control
- Inbound and outbound audio level meter, digital clock and Start menu icon
- Activate external siren/strobe light on emergency

## Easy to deploy

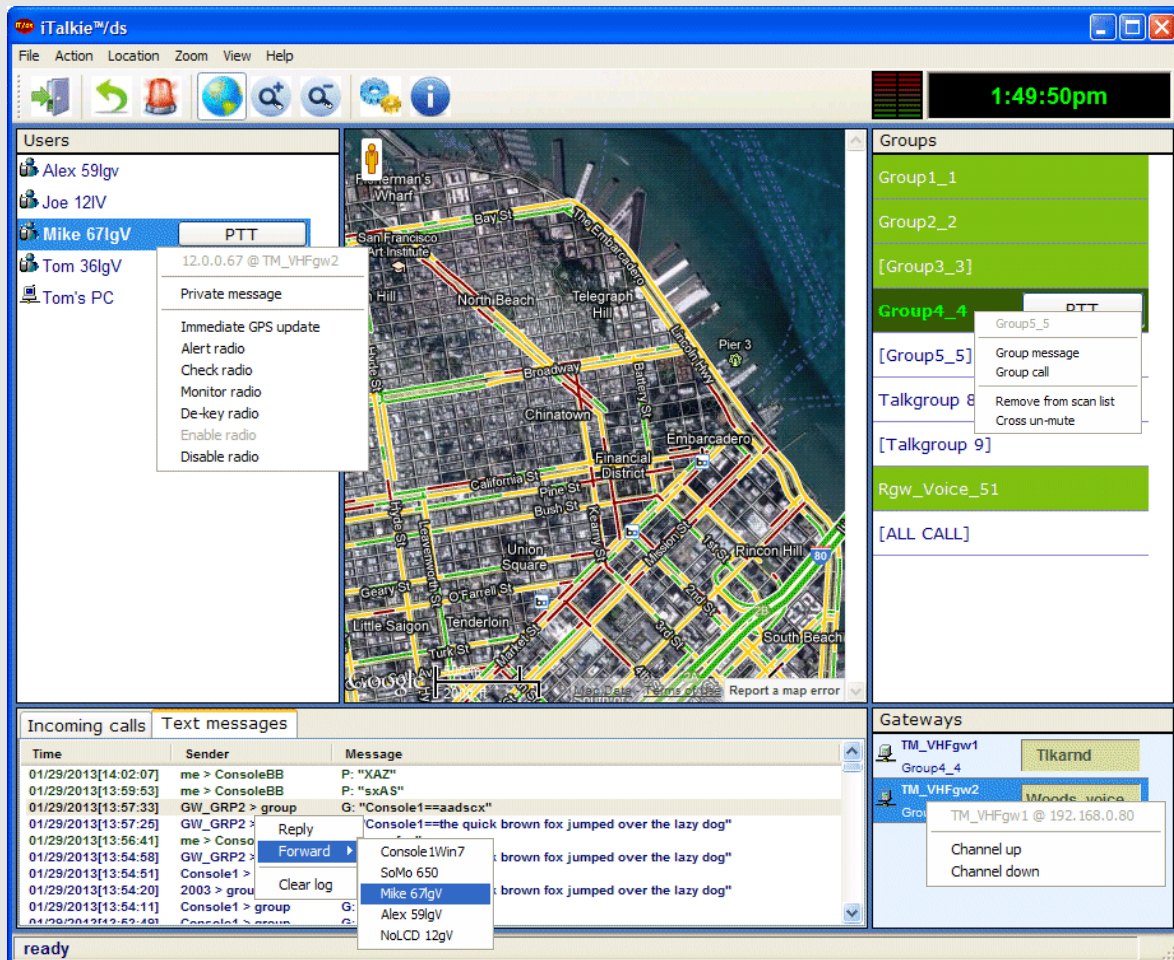
- Serverless architecture
- Self-detecting and configuring
- Thin client with IP network load optimization
- Programmable PTT key
- Automatically "Start with Windows" user option
- Very high quality voice with background noise canceling

## Compatibility and Requirements

- MS Windows XP/7/8
- Any PC sound card with a headset or directional mic
- Any TCP/IP wired or wireless LANs
- Optional: footswitch or microphone with PTT button

## Professional services:

- Customizations available for special requirements



TABLETmedia, Inc.  
3035 Scott Street  
San Francisco, CA 94123  
Tel: +1 (415) 567-8100

<http://www.tabletmedia.com> - 2/13  
Copyright © 2001-2013 TABLETmedia, Inc. – All rights reserved.  
TABLETmedia eztracker@trbo™, phone@trbo™, text@trbo™,  
iTalkie™ and iFon™ are trademarks of TABLETmedia, Inc.  
All other trademarks belong to their respective companies.

**TABLET**media